

Capilano College's New Lynnmour Centre

~ opening this fall.

The North Shore's Public Community College is about to open its New Lynnmour Centre!

After five years of operation Capilano College is finally getting its own facilities. This September the College plans to open the doors at Lynnmour to the North Shore public for the College's regular Fall semester.

This will not be the College's only Centre hereafter. The College will continue to operate a day and evening centre in St. David's Church at Taylor Way and the Upper Level's Highway in West Vancouver, and will continue some specialized programs at West Vancouver Senior Secondary.

However, the new Lynnmour Centre will be the core centre of Capilano College for the foreseeable future. It is particularly significant that the new complex in the trees off Lillooet Road will represent the College's first facilities of its own, the first substantial facilities especially designed to meet the unique space needs of a thriving community college.

- *Capilano College is probably the most important Educational Institution on the North Shore.*
- *It is the only Higher Educational Facility on the North Shore.*
- *It was set up in response to a Public Referendum in 1968 by residents of North and West Vancouver and Howe Sound.*
- *Since then it has provided direct educational and Recreational services to over 7000 persons of all ages.*
- *The actual enrolment for this forthcoming fall semester alone is expected to top 1600.*

CAPILANO COLLEGE MOVES

Lynn timer - A great step forward for Capilano College Students

Students regardless of age or program (except for Art) will be able to take all their courses at the Lynn timer Centre if that is what they want to do. This is a new advantage, as in the past College students on full-time programs usually found themselves travelling daily between two or more centres for their courses and tutorials and other services.

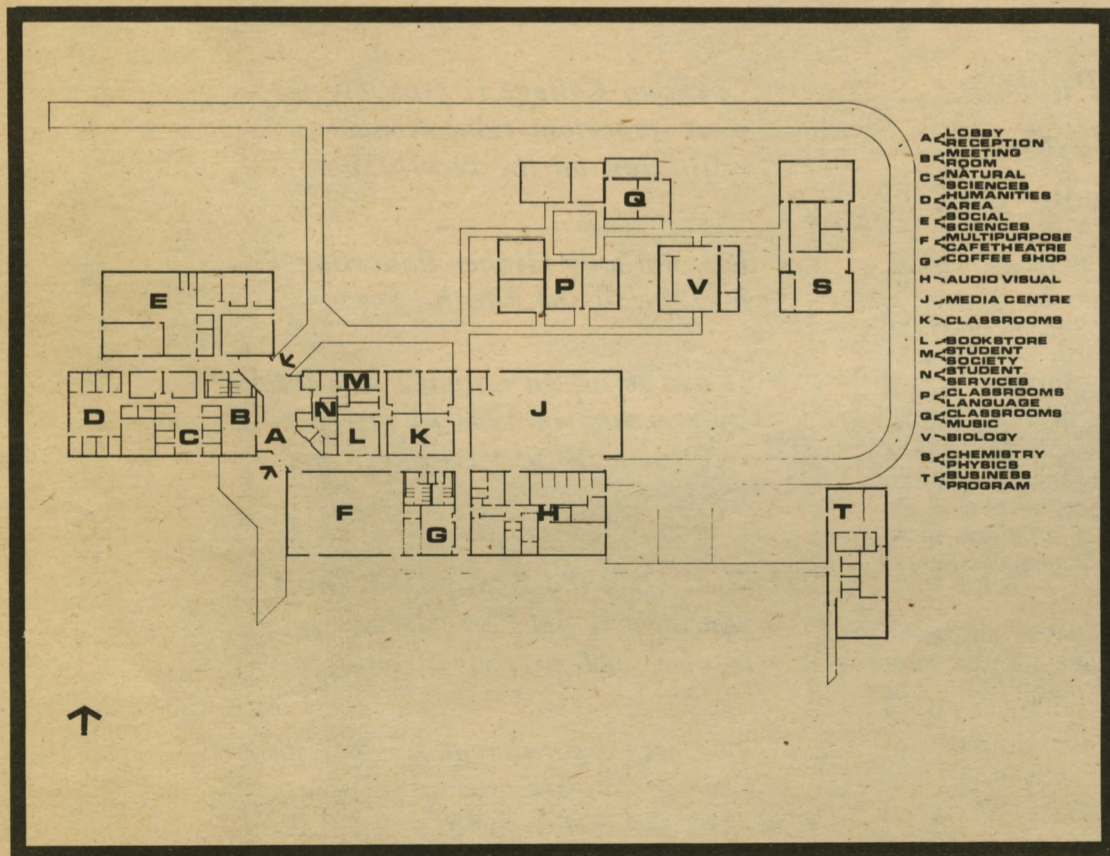
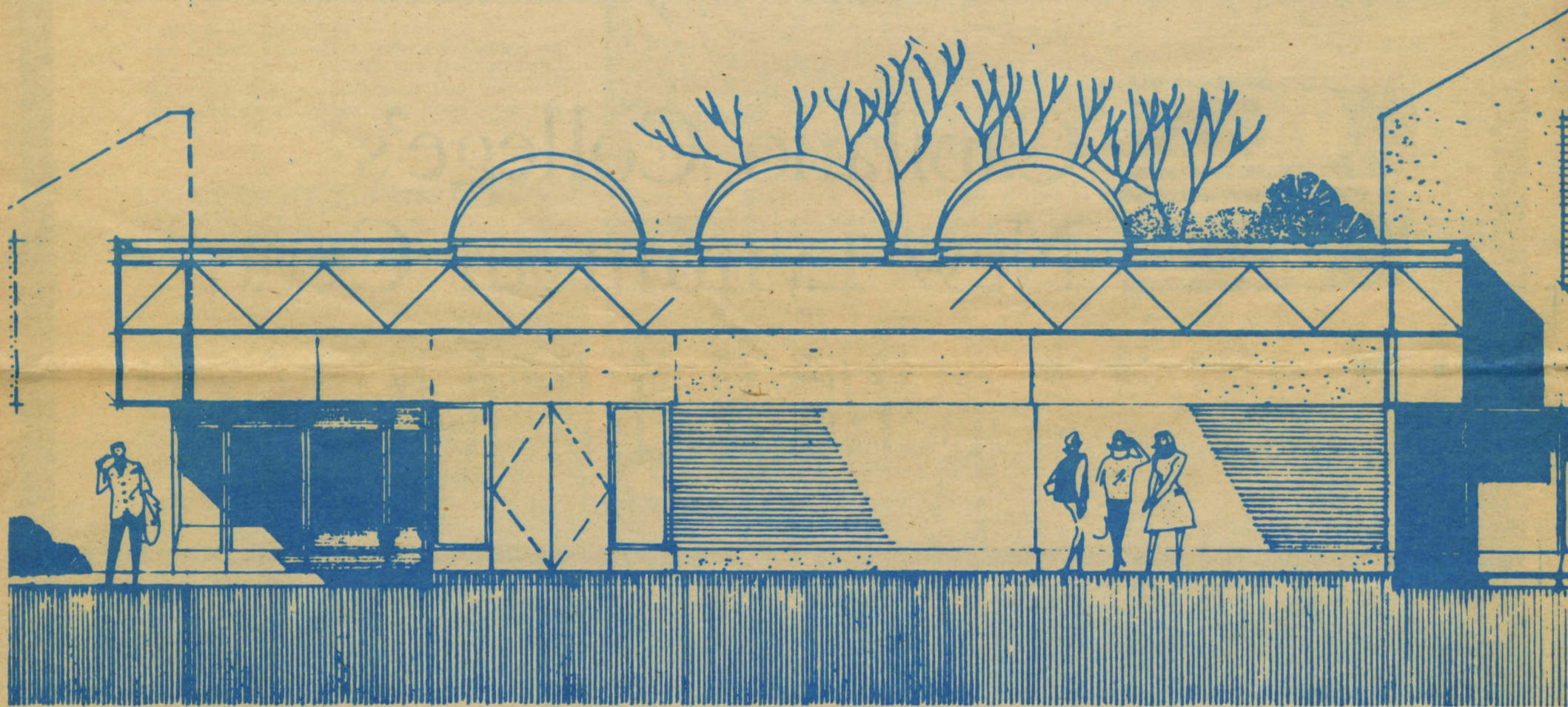
Also Lynn timer will provide the first proper student facilities

The College students will finally have some proper functional space to do their thing. There will be the cafe-theatre with an adjoining coffee shop, a lobby lounging area, and Student Society offices. Not to mention special divisional spaces where they can meet and talk with the faculty.

Why the Lynn timer location?

The main reason is simply that this was the only large enough piece of land available to the College at this time on the entire North Shore.

It may seem to be too far away from the geographic centre of the community for the main College facilities. Yet, it is clear that with the present terrific residential development in that immediate area, the centre of population for the North Shore is quickly moving east of Lonsdale.



What facilities will be in the new College Lynn timer Centre?

The Phase I facilities opening at Lynn timer this September will be over 50,000 sq. ft. and will include:

- the main College Media Centre (Library)
- the majority of the College teaching rooms
- all the Sciences labs
- the Language lab
- the main divisional-faculty areas
- the Student Services Centre and counselling-advisory services
- special studios for the Audio Visual Resources Program
- the main administrative offices
- a cafe-theatre (a student-faculty eating and talking area with sunken bear pit).

ITS CORE TO LYNNMOUR

You may not know that Capilano College (among other things) is a fully accredited Institution of Higher Education in B.C. and offers:

- A full two years of university including pre-med, pre-dentistry, pre-nursing.
- 11 different Career Programs which provide professional training leading directly to interesting professional jobs.
- Over 20 different credit courses.
- A fascinating non-credit series of Community Services events featuring community concerts in music and the performing

arts, forums on community problems, family film series, special work shops and talk-ins on interesting subjects, and special lectures of interest.

And you probably did not know that Capilano College also offers:

- An open door for admission if you are 18 years of age or over — your past academic standing is of no concern. We do not prejudge what you can do — we let you find out what you can do — be it a full time course load or just one course.

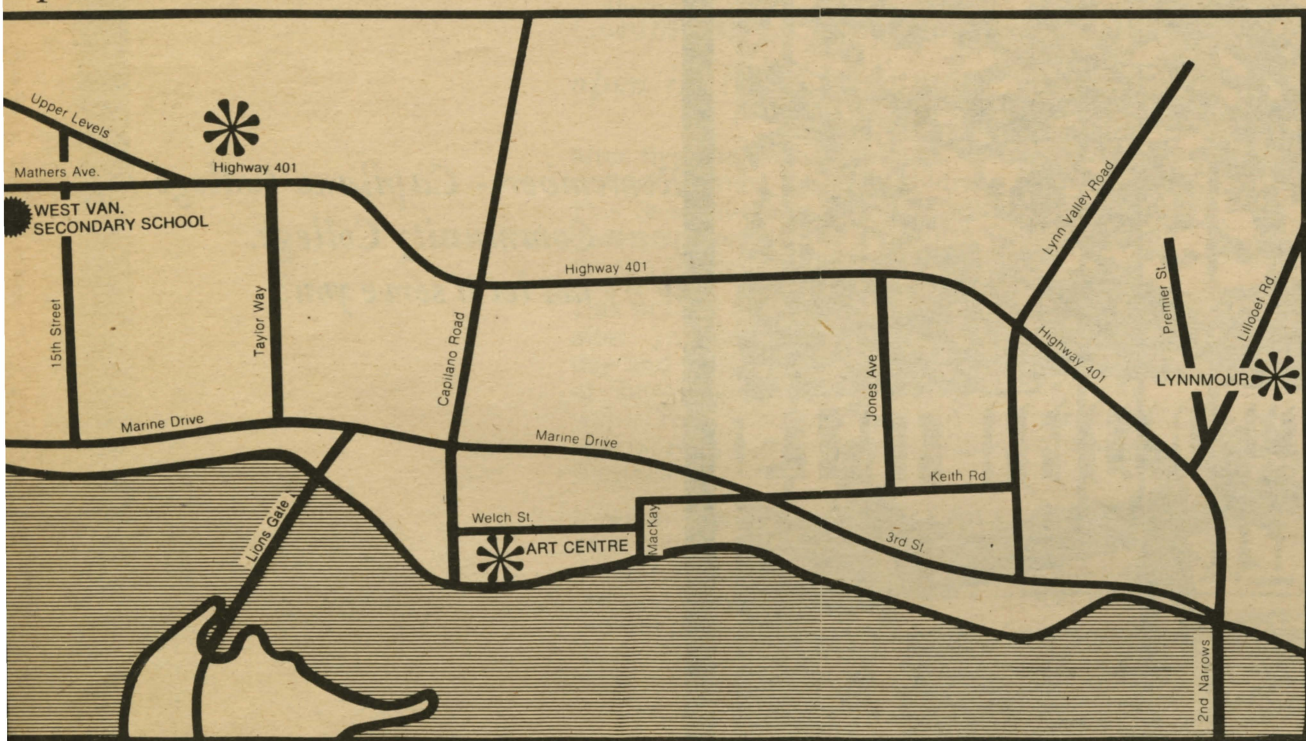
- A very dedicated faculty who are hired primarily to work with students and create a soothing and scintillating learning environment. They are not hired to publish and research.

- Opportunities to participate in many different learning innovations, including soon to be offered home learning packages mixing such things as tape recordings, written materials, tutorials with faculty, and maybe a bit of television.

- A special welcome to older adults.



*Capilano College
Campus Locations 1973-74 Year*



St. David's United Church,
Taylor Way and Upper Levels Highway,
West Vancouver, B.C.

Art Centre, 1801 Welch St., North Vancouver

West Vancouver Secondary School,
1750 Mathers Ave., West Vancouver

Portable "C",
West Vancouver Secondary School Campus

- ☀ Day and Evening Classes
- ☀ Evening Classes

Travel to the New Centre

The Upper Levels Highway makes car travel time about 8 minutes from Lonsdale and about 12 minutes from Taylor Way.

BUS TRANSPORTATION to the Lynnmour Centre has been promised by B.C. Hydro. The plan is that one of the main North Vancouver bus routes will run regularly right into the new centre.

Capilano College is practicing ecological conservation at the new Lynnmour Centre



At the Lynnmour site the College did not clear the land for construction as is the normal practice. The buildings were sited IN the trees, in natural clearings where possible. Actually very few good trees had to be removed.

And most important, as little as possible of the natural foliage and forest floor covering was disturbed.

Even where the odd tree had to be removed the stumps were left so that the total interlocking root systems would not be disturbed and adjacent trees would continue to flourish.

You'd better believe it!
The College has had a renown landscape expert calling the tune on the site development. But more than a Landscaper this man is a practicing Ecologist and has been (in a rare sense) for very many years.



THE LYNNMOUR CENTRE IS REALLY IN THE TREES, indeed practically surrounded by a nice prime second growth forest. Hopefully, only the occasional footpath or carefully exploring student will penetrate into the natural undergrowth.

Remember - Capilano College is your Community College. Why not let it serve you?