

# 5/4 MAGAZINE

EXPLORING JAZZ IN THE NORTHWEST FROM MAINSTREAM TO OFFBEAT



Lionel Hampton Jazz Festival  
After Hours Reception  
Immediately following the concert  
February 25, 1995

Lionel Hampton Jazz Festival  
After Hours Reception  
Immediately following the concert  
February 24, 1995

Lionel Hampton Jazz Festival  
After Hours Reception  
Immediately following the concert  
Thursday, February 23, 1995  
University Inn/Best Western  
University Room  
Complimentary Ticket  
Admits one person

## Hamp plays the Palouse

p.3

# PREVIEWS

## NORTH OF THE BORDER by

Laurence Svirchev

**C**oat Cooke is back playing in the trio format. "I get to blow, something I haven't done much of in the past few years." Writing for and organizing small and large ensembles have kept the tenor player away from the blowing context.

He leads the Evolution, a hard driving electrically oriented band with a funk edge. He is also the leader of the sweet and tender Stellar Saxophone Quartet and works regularly with the contact improvisers of EDAM (Experimental Dance and Music). In the past he was a member of Lunar Adventures, a quartet that recorded *Alive in Seattle* (Nine Winds, 1988).

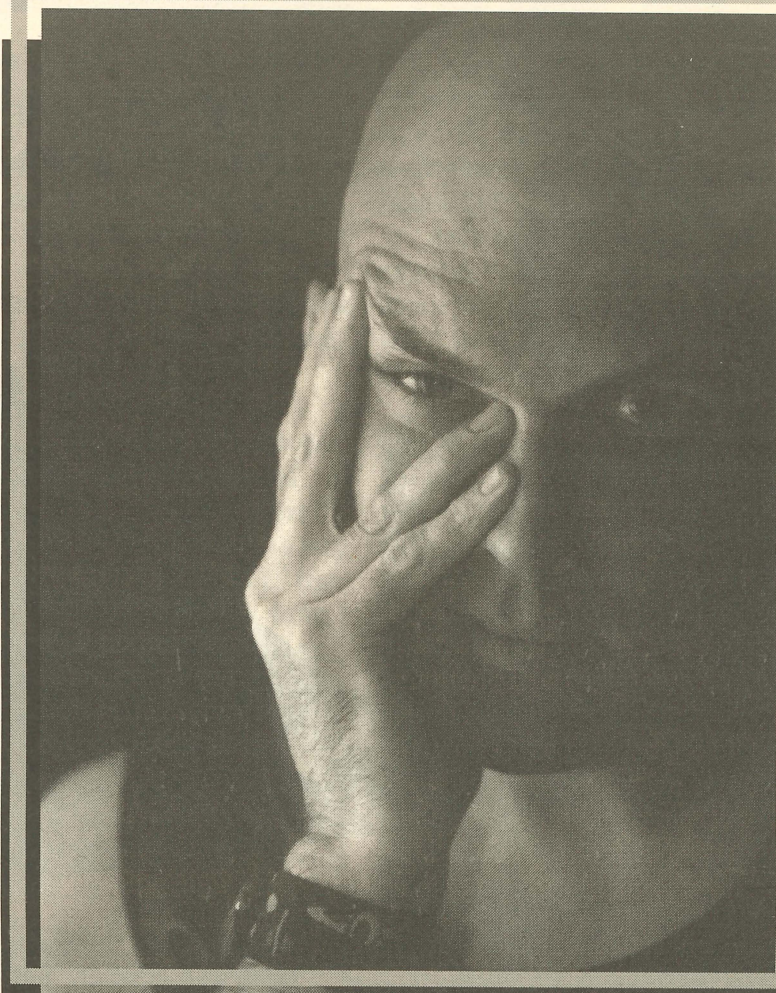
He is also co-artistic director of the New Orchestra Workshop. Last year NOW played and recorded the *Witch Gong Game* under the direction of composer and bassist Barry

Guy. This May, NOW is releasing a CD of the music of Quebec guitarist Rene Lussier.

And now it is time to blow again. "The trio format gives me room: I can do solo, duo, trio. There's plenty of space to make a lot of sounds, both conventional and bizarre," says Cooke. Many musicians may be content with one trio, but in addition to all his other work, Cooke is stepping out with two trios. One is

electric, the other acoustic.

He introduced the acoustic trio this February at Cafe Deux Soleils (Two Suns) in Vancouver. The Cafe is a hip new joint on Commercial



Coat Cooke

Photo: Laurence Svirchev

"Well, I'm not doing anything different. What you are hearing is the way I've been playing for years."

Drive, a street that until now has been an empty zone for creative music. Coffee house crowds are usually submerged in their own self-important banter, but the folks at Deux Soleils are all ears for the jazz sessions each Sunday night.

Cooke arrived with several spare-looking original charts and burned all night. He is sounding great these days, fresh ideas pouring out of his horns with the turbulent power of the maelstrom. He reacts with surprise when told his playing is refreshingly exciting. "Well, I'm not doing anything different. What you are hearing is the way I've been playing for years. But now you are hearing more of me. It's great to be able to stretch out." The Coat Cooke Trio, with Dylan van der Schyff on drums and Paul Blaney on bass will play Cafe Deux Soleils on April 23. ✖✖

## CORNISH CONCERTS FEATURE

### Larry Coryell & Jovino Santos Neto

by Sandra Burlingame

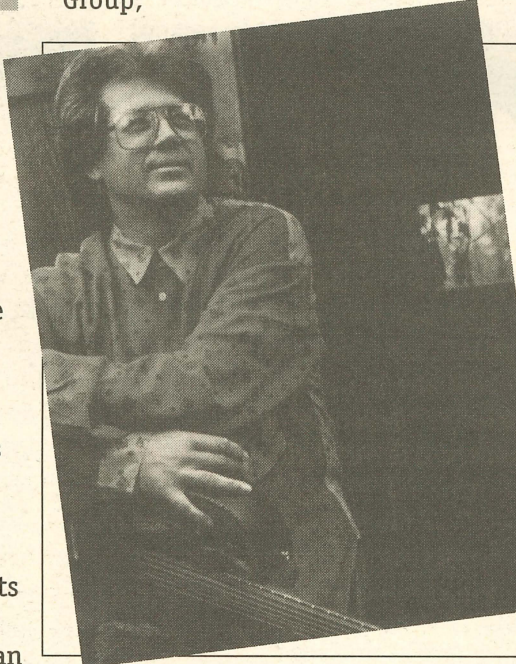
**G**uitarist Larry Coryell was born in Galveston and moved to New York City in 1966, but the intervening years were spent in eastern Washington. He became a fixture on the Seattle jazz scene during his days at the University of Washington, playing the Penthouse with Chuck Metcalf and Embers with Dean Hodges and Sarge West.

Coryell, who over his career has played with many jazz greats such as Chico Hamilton, Miles Davis and John McLaughlin, is an acknowledged pioneer of the jazz-rock movement. His late '60s group Free Spirits included drummer Bob Moses and the late saxophonist Jim Pepper, and he was a member of Gary Burton's quartet that fused jazz with rock and country music. At the other extreme Coryell has recorded the work of classical composers Stravinsky and Debussy, earning him the sobriquet "renaissance musician."

Coryell will be in residence at

Cornish College of the Arts, April 6-8. He will offer a free master class on the 7th from 1-3 pm. Joining him in concert on April 7 & 8 will be Mark Sherman (from New York) on piano and vibes, Chuck Deardorf on bass, and Dean Hodges on drums.

In 1977 pianist/flutist/composer/arranger Jovino Santos Neto joined the Hermeto Pascoal Group,



Larry Coryell Photo: Anna Grossman

one of the world's most innovative ensembles. Despite rehearsals that were legendary in length and which resulted in sophisticated arrangements, Pascoal's group was known for the freedom allotted to each of its members to add his own personal touch. In 1993 Jovino left Brazil for Seattle to continue his studies of orchestral conducting and to transcribe the music of Pascoal.

In Seattle he found a core group of accomplished musicians who

shared his interest in bridging the gap between his native Brazilian rhythms, jazz, and orchestral textures. The quartet, with bassist Chuck Deardorf, saxophonist Hans Teuber, and drummer Mark Ivester will perform Jovino's original music at PONCHO Hall on April 28. ✖✖

## SONGS RICH IN SPIRIT: Mike Coffey Revives Ives

by Mike Marlin

**I**n his "Postface to 114 Songs," composer Charles Ives (1874-1954) expresses his apprehension about the overt self-indulgence he believed prevalent in music and art. The self-conscious Ives, a child prodigy who became an organist for his church choir in Danbury, Connecticut, at age 12, quit his professional music career in 1906 and entered the insurance industry. Some historians infer that Ives grew tired of the judgments and pettiness of the music elite.

Charles' father was Ives' primary musical influence. In their music lessons his father would experiment by asking him to sing "Hot Cross Buns" in E flat while playing it in G flat on the piano. Ives himself later experimented with sound, stretching piano strings with weights or filling a series of water glasses to achieve quarter tones.

Mike Coffey, multi-talented baritone singer (and bass player for the Scallywags) will present an

afternoon of Ives' work on Saturday, April 8, at the Seattle Art Museum at 3 p.m. Coffey, a graduate of the classical program at Cornish College, sang in a boys' choir in a church on the Yale green adjacent to where Ives studied and wrangled with his teachers.

Last summer Coffey spent a week at Yale poring over original manuscripts, reading correspondence and taking copious notes from the Charles Ives Collection. For Mike, getting into Ives' head is vastly important for a correct interpretation. "For this performance I want to be Charles Ives," explains Coffey. "I want to know how he felt when he composed and what was happening in his life."

Like Emerson, Thoreau and other transcendentalists, Ives believed the music cannot be separated from life. Humanist themes run throughout his songs. Many of his lyrics express nostalgia for simpler, soul-nurturing times. Others challenge the music establishment and "lillypads," Ives' term for critics who couldn't handle the new music of the day.

When asked about additional influences from the classical vocal pantheon, Mike could think of few. Ives' music cannot really be considered classical or popular. It is its blurring of strict delineations and the intensity of Coffey's interpretations that promise excitement and magic for listeners.

Mike will be accompanied by Julie Ives (no relation) at the piano both collaborated at Mike's 1992 Senior Recital, which featured Ives' songs. The duo will be joined by Tim Young on electric guitar and Mike Stone on marimba for two selections. ✖✖

# MICHAEL SHRIEVE

by John Atkins

**D**rummer Michael Shrieve has a new album, *Fascination*, on CMP Records with Bill Frisell and Wayne Horvitz. Over lunch at the Sunlight Cafe in February he talked about his music and the reunion with his bandmates from Santana, the group with which Shrieve is most widely associated.

**JA:** The original members of Santana are getting back together?

**MS:** Yeah, we've been playing together for the last six, eight months. It's a lot of fun. It's kind of like going back to the old



Michael Shrieve

neighborhood and finding out that it hasn't changed. We haven't done it in a long time, so it's fresh, and we're writing a lot of new material plus playing some of the old. We're calling the band Abraxas. Alphonso Johnson is playing bass and Neil Shawn is playing guitar. Otherwise, it's all the original players. I'm going down [to San Francisco] to do a week of writing.

**JA:** Do you have tunes pre-prepared for this band?

**MS:** We work in a variety of ways. Sometimes I'll work off something someone else has done, or I'll initiate something off the drums, write some stuff on the sequencer, and have them add to it. Often, it's a matter of just jamming and then making a tune out of it later, which was the way a lot of the original Santana stuff was done.

**JA:** How did the *Fascination* album come together?

**MS:** I was driving down the street and I saw Bill Frisell riding his bicycle. I pulled over and said, "Hey, let's do a record with organ, drums, guitar and no bass." And he said, "I was thinking the same thing." So I called up Wayne and the label CMP, and we hooked up the dates and did it here in Seattle at Bob Lang Studio. Got a good engineer, Don Gilmore, and Kurt Rinker, who owns CMP, produced it.

**JA:** Do you like having arrangements before you go into the studio?

**MS:** Yes, definitely. For the *Fascination* record, I just had some sketches together. Then we rehearsed for three or four days and went in

and played. The idea was to keep it loose. I was open to them to add to the writing because they're both master composers, much more than I am. But I had a thin idea of the approach I wanted to take, where I wanted to be coming from drum-wise. There's some stuff that's going to be too straight for Bill and

Wayne's fans. But it's an honest record for me. Some of the tunes, like "Living for the Law," the Chris Whitley tune, I would never have done on a record of my own. But I know Bill sounds great on that kind of simple, straight-ahead tune, and I wanted to find a

vehicle for him. And "Fascination" sounds like something from the fifties, but I liked it. There's something enriching, stimulating in the music Bill and Wayne make. When they're playing, they're very in it and very positive. What they bring to the experience makes you feel good. I'm aware that they're very talented guys. It felt great to play with them.

**JA:** How do you tune your drums?

**MS:** In fourths. I don't necessarily tune them precisely. On [*Fascination*] I used small drums and an 18" X 18" bass drum, which is a different kind of sound and completely open. There was resonance to it. There's really no bass on the record per se. Wayne doesn't play pedals, so whatever bass there is is coming from his left hand. I wanted to have that low frequency tone in the bass register.

**JA:** Where did you come up? Who were you going to see?

**MS:** In the Bay area. That was the period of Miles' group with Tony Williams. So whenever they'd come by, I'd try to go see them. I was too young to get in the clubs but Tony Williams was too young to be playing in the clubs, so they'd often not serve drinks or they'd make a special case for us. I saw Miles at Both/And in San Francisco—he and Coltrane. I was into jazz but I was also into the scene at the time, you know, all the hippie stuff. Although, I never

Continued p.11

## RADIO CITY

by Mike Marlin

This column features forthcoming attractions from local and regional radio programs. Please call with info re special features (206) 547-4627. Programmers outside the Seattle listening area are encouraged to send tapes and/or information about shows to me at 406 N. 48th St., Seattle, WA 98103. Deadline for submissions is the 10th of each month preceding publication month.

### TIME TO GET WIRED

On April 3, 1995, JazzWIRE, a weekly radio program featuring jazz produced by individuals and independent labels, debuts on the Public Radio satellite system. Produced at KBEM-FM in Minneapolis and hosted by Paul Winger and Maryann Sullivan, each edition will emphasize a different theme: the recordings of an individual artist or label, recent releases from a particular city or region, or a certain instrument, style or group format. Musical selections will be accompanied by interviews with artists, media, broadcasters and independent label representatives.

"JazzWIRE's mission is to provide an outlet for jazz artists and labels who might not otherwise get the opportunity to have their recordings broadcast nationally," says Winger. He expects 30 to 50 stations to join the network for

the first segment of 13 programs which include: Jazz from the Twin Cities, Big Band Spotlight, Jazz Guitar Spotlight, Acid Jazz Explorations, and A Conversation with Anthony Cox. Some labels to be featured are GSP, a strictly guitar label out of San Francisco; Wavetone, owned by bassist Mark Egan; and Tenacious, owned by drummer Alphonse Mouzon.

Interested Northwest musicians and producers can submit recordings to JazzWIRE, 855 Village Center Drive, Suite 317, St. Paul, MN 55127-3016 or call (800) 275-2957/(612) 787-0577. FAX—(612) 644-9142. Email—jazzwire@aol.com. As far as I know, none of the Puget Sound public radio stations are planning to carry JazzWIRE. A few hundred phone calls might start the wire unraveling. Wherever you are, let your public radio station know about JazzWIRE!

### KJAZ IS BACK

KJAZ, the former Bay area 24-hour, commercial jazz station, is still alive and now available as a commercial-free entity via satellite. The station, in its 36th year, has retained its extensive library as well as many of its former programmers and established shows. KJAZ hopes Northwest jazz fans will petition local cable companies to begin offering its services. Call (510) 769-4849 for details.

## Spencer's

STEAKHOUSE & JAZZ BAR

Mondays 7:30 - 11pm

Smooth 99FM Jazz Jam

featuring

Darrin Motamedy & Friends

Tuesdays 7 - 11pm

KPLU Artist Showcase

with the

Barney McLure Trio & Special Guests

Hosted by KPLU's Jim Wilkie

Wed. - Sat. Various Top Artists

14711 NE 29th Place, Bellevue (206) 881-8888



## Salute! in Citta!

Ristorante Italiano

"The only resaurant offering Jazz seven nights a week!"

LIVE JAZZ

Friday and Saturday Nights  
9:30 - 1:30

## The Brian Nova Trio

featuring Barney McClure, Greg Williamson and Buddy Catlett

Special Guest on April 14th & 15th  
DEE DANIELS

Thur 9-1 EDMONIA JARRETT / MICKEY MARTIN QUARTET  
Wed 8-12 PETER VINIKOW / SUSAN PASCAL TRIO  
Tues 8-12 CHUCK METCALF GROUP  
Mon 8-12 ANDRE THOMAS & QUIETFIRE  
Buddy Catlett's Sunday Night Jam Session 9-1am

"It's the Jazz Room, full of Jazz heads ...Sweet." -Seattle Times

"...the resulting atmosphere, loose & relaxed, is seemingly reminiscent of those fabled jazz clubs of yore!" -Seattle Weekly

"...a scene is born!...Nova's command of Jazz Guitar, his beautiful sound, and his engaging stage manner, merge perfectly with the room and create a warmly welcoming atmosphere!... the rest is Seattle Jazz History!" -Earshot Jazz

No Cover 612 Stewart Street, Seattle (206)728-1611

# April 1995 by Bob Mariano

## Concerts & Special Events

✳ **CJ Chenier & The Red Hot Louisiana Band**, Meydenbauer Center, Bellevue Wa, 4/1, 7:30pm. Also, Auburn Performing Arts Center, Auburn WA, 4/2, 3pm. (628-0888, 881-0999)

✳ **"Final Four" Concerts: Susan Pascal Duo**, 9am-10:30am, **Deems Tsutakawa Trio**, 11am-12:30pm, **Michael Powers Group**, 3-5pm, Westlake Park, Seattle, 4/2. **Evolution w/Becca Duran**, 2-3:30 pm, **UW Studio Ens. #1**, 4:30-5:30pm, 4/3.

✳ **"Final Four" Concert: Darren Motamedy**, noon-1:30pm, **Deems Tsutakawa Trio**, 2-3:30pm, Occidental Park, Seattle, 4/3.

✳ **Wynton Marsalis Quartet**, Pantages Theater, 901 Broadway, Tacoma WA, 4/7, 8pm. Meany Theater, UW, Seattle, 4/8, 8pm.

✳ **Volunteer Park Conservatory Orchestra**, Oddfellows Hall, 915 E Pine St, Seattle, 4/7, 8pm. (322-2950)

✳ **Larry Coryell Master Class**, Cornish College, PONCHO Concert Hall, Seattle, 4/7, 1-3pm. Free. (323-1486)

✳ **Larry Coryell**, Cornish College, 4/7 & 4/8, 8pm. (323-1486)

✳ **Arturo Sandoval**, Meany Hall, UW, Seattle, 4/7, 8pm. Rialto Theater, Tacoma WA, 4/8, 7:30pm. (628-0888, 881-0999)

✳ **Greg Williamson and the Big Bad Groove Society**, Sandy Bradley's Potluck (a live national broadcast on KUOW FM), MOHI, 4/8, 11am-noon.

✳ **Mike Coffey presents works of Charles Ives**, Seattle Art Museum, 4/8, 3pm.

✳ **The Four Freshmen**, Fifth Ave Theater, Seattle, 4/8, 2:30pm & 7:30pm (206-745-5947, 206-292-SING)

✳ **Music of Frank Zappa Conducted by Joel Thome**, Opera House, 4/8, 8 pm.

✳ **PhiLAndrers**, Leif Erikson Ballroom, 2245 NW 57th St, Seattle (Ballard), 4/8, 8:30pm-mid. (528-8141)

✳ **Julian Priester Trio**, Seattle Art Museum, 4/13, 5:30-7:30pm. (206-654-3100)

✳ **Cleo Laine & The John Dankworth Group**, Opera House, 4/14 8pm, 4/15, 2pm & 8pm. (206-443-4747, 206-292-ARTS)

✳ **Garfield HS Jazz Ensemble and Orchestra**, Meany Hall, UW, Seattle, 4/21, 8pm. (789-0535, 527-1611)

✳ **Trilok Gurtu & David Torn**, Backstage (2208 NW Market St., Ballard) 4/23, 8 pm. (781-2805).

✳ **Contemporary Group, Stuart Dempster & William O Smith, Directors**, Meany Theater, UW, 4/24, 8pm. (206-543-4880)

✳ **Greta Matassa w/Joe Baque & Andy Zdrozny**, Crepe de Paris (5th Ave in Rainier Square, Seattle) 8:30 & 10 pm, 4/27-29 (623-4111)

✳ **Jazz Night Concert #4**, jazz ensembles from Mountlake Terrace, Garfield, Roosevelt, Kentridge, & Marysville-Pilchuck, Mountlake Terrace HS Theater, MLT WA, 4/27, 7pm. (670-7796)

✳ **Jazz Artists Series, Marc Seales**, Director, Brechemin Auditorium, Univ of Wash, Seattle, 4/28, 8pm. (685-8384)

✳ **Jovino Santos Neto**, Cornish College, Seattle, 4/28, 8pm. (323-1486)

### 1 Sat

Kelley Johnson Quartet, 8:30pm-12:30am, **SP**  
Loose, 9pm, **GS**  
Chunkey Monkeys, 9:30pm-12:30am, **SR**  
Jazz 8-11:30pm, **JC**  
King-a-lings, 8pm, **NO**  
Paul Killion Trio, **GR**  
Kathleen O'Neill, 9pm-1am, **UP**  
CJ Chenier & Red Hot Louisiana Band, **C&SE**

Fred Radke Band, 9pm-1am, **FS**  
Brian Nova, 9:30pm-1:30am, **SC**  
Red Kelly & Friends, **KC**  
Milo Petersen Trio, 10pm-1am, **CS**  
Susan Carr Ensemble, 8-11pm, **WA**  
Woody Woodhouse, 8-11pm, **SB**  
Jazz GSA, 8:30-11:30pm, **GB**

### 2 Sun

Kelley Johnson, 7:30-10:30pm, **JB**  
Daryl Jahneke Group, 9pm, **GS**  
Patricio Contreras, 7-9:30pm, **SR**  
John Hodgkins Band, 8pm, **NO**  
Double Forte, 5-8pm, **PW**  
Marc Smason & Larry Fuller, 6-10pm, **UP**  
Brian Nova Trio, 9pm-mid, **BB**  
CJ Chenier & Red Hot Louisiana Band, **C&SE**

Jazz Jam, 7:30pm, **MS**  
Bobby Randall/Woody Woodhouse, 7-10pm, **WA**  
Buddy Catlett Jam, 9pm-1am, **SC**  
"Final Four" Concert, **C&SE**

### 3 Mon

Andre Thomas & Quietfire, 8pm-mid, **SC**  
Darren Motamedy, 7:30-11pm, **SP**  
Jonathan Swanson, 8-11pm, **SR**  
Jam w/Buddy Catlett, 7-11pm, **UP**  
New Orleans Quintet, 6:30-9:30pm, **NO**  
Jazz Jam, 9pm-mid, **BB**  
"Final Four" Concerts, **C&SE**

### 4 Tue

Barney McClure Trio, 7-11pm, **SP**  
Chuck Metcalf Group, 8pm-mid, **SC**  
Julian Catford, 8-11pm, **SR**  
Toby Schneider, 7-11pm, **UP**  
File Gumbo Zydeco Band, 7-10pm, **NO**  
"Music in the Present Tense", 9pm, **TT**

### 5 Wed

Kelley Johnson, 7-11pm, **WH**  
Peter Vinikow/Susan Pascal Trio, 8pm-mid, **SC**  
Los Canasteros, 9pm, **GS**  
Julie Wolf & Hans Teuber, 8-11pm, **SR**  
Blue Cabaret, 6-9pm, **PS**  
Kris O'Gradyt, 7-11pm, **UP**

**CORNISH COLLEGE, PONCHO Concert Hall, Seattle WA: Senior Recitals.** (206-323-1400) **Jennifer Davis** w/John Hansen, Chuck Deardorf, Larry Jones, Hans Teuber, 4/9, 3pm; **Laksar Reese** Quintet, plus Baile De Vida, 4/9, 8pm; **Jason Vontver**, 4/13, 8pm; **Lorrie Ruiz**, 4/23, 8pm; **Jazz Orch & Ens**, 4/24, 7pm; **Vocals & Ens**, 4/25, 7pm; **Latin Ens & Vocals** 4/26, 7pm; **Free & Fusion Ens**, 4/27, 7pm; **Michael Lewis**, 4/30, 8pm.

### WANT TO GET LISTED??

Please send May calendar information by 04/15/95, 5pm, to 5/4 MAGAZINE, 602 E Harrison St, Seattle, WA, 98102 FAX:206-323-2690

**Note:** The information below was accurate when we received it, but post-deadline changes are possible. Please call ahead to verify.

Primo Kim, 6:30-10:30pm, **CP**  
Floyd Standifer Group, 7:30-10:30pm, **NO**  
Dehner Franks, 7-11pm, **SH**  
Michael Bisio/Vinny Golia, 7-9pm, **SW**

### 6 Thur

Kelley Johnson, 7-11pm, **WH**  
Woody Woodhouse, 8pm-mid, **SP**  
Edmonia Jarrett/Mickey Martin, 9pm-1am, **SC**  
Greg Williamson's Big Bad Groove Society, 8-11:30pm, **KC**  
Jay Mabin Quartet, 8 & 9:30 pm, **SL**

### HOW TO USE THE JAZZ CALENDAR

Check the daily listings for items that interest you. If the item has a two-character code after it, the event takes place at a club. Find that two-character code in the Calendar Abbreviations Key to determine the location of the event. If the item has C&SE after it, the event is listed chronologically in the "Concerts and Special Events" section.

Brian Nova, 9:30pm-1:30am, **SC**  
Tina Lear, 8:30pm-12:30am, **SP**  
Bob Winett Trio, 8-11pm, **WA**  
Deems Tsutakawa Band, **EW**  
Marilyn Lerner Trio, 9pm, **GS**  
Chunkey Monkeys, 9:30pm-12:30am, **SR**  
Jazz 8-11:30pm, **JC**  
Paul Killion Trio, **GR**  
Ellen Marx, 8pm-mid, **UP**  
Primo Kim, 9:30pm-1am, **CP**  
Dehner Franks, 8pm-mid, **SH**  
Red Kelly & Friends, **KC**

Michael Bisio Trio, 10pm-1am, **CS**  
Mike Coffey, **C&SE**  
PhiLAndrers, **C&SE**

### 9 Sun

Buddy Catlett Jam, 9pm-1am, **SC**  
Vinnie Golia Trio, 7:30 & 9:15pm, **JA**  
Greg Williamson's Big Bad Groove Society, 8:11:30pm, **TT**  
Deems Tsutakawa Band, **EW**  
Joe Bjornson, 9pm, **G**  
Patricio Contreras, 7-9:30pm, **SR**  
Elizabeth Perera, 7:30-10:30pm, **JB**  
Double Forte, 5-8pm, **PW**  
Trish Hatley, 6-10pm, **UP**  
Sonny Fortune Quartet, 8pm, **SF**  
Brian Nova Trio/Woody Woodhouse, 9pm-mid, **BB**  
Jazz Jam, 7:30pm, **MS**  
Tom McFarland Trio, 7:10pm, **WA**  
Local 493 Reunion Band, 3pm, **CM**

### 10 Mon

Andre Thomas & Quietfire, 8pm-mid, **SC**  
Darren Motamedy, 7:30-11pm, **SP**  
Jonathan Swanson, 8-11pm, **SR**  
Jam w/Buddy Catlett, 7-11pm, **UP**  
New Orleans Quintet, 6:30-9:30pm, **NO**  
Jazz Jam, 9pm-mid, **BB**

### 11 Tue

Gonzalo Rubalcaba, 7:30 & 9:30, **NO**  
Diane Schuur, 8:30 & 10:30pm, **JA**  
Chuck Metcalf Group, 8pm-mid, **SC**  
Jay Clayton Project, **TT**  
Julian Catford, 8-11pm, **SR**  
Barbara Brockhaus, 7-11pm, **UP**  
File Gumbo Zydeco Band, 7-10pm, **NO**  
Barney McClure Trio, 7-11pm, **SP**

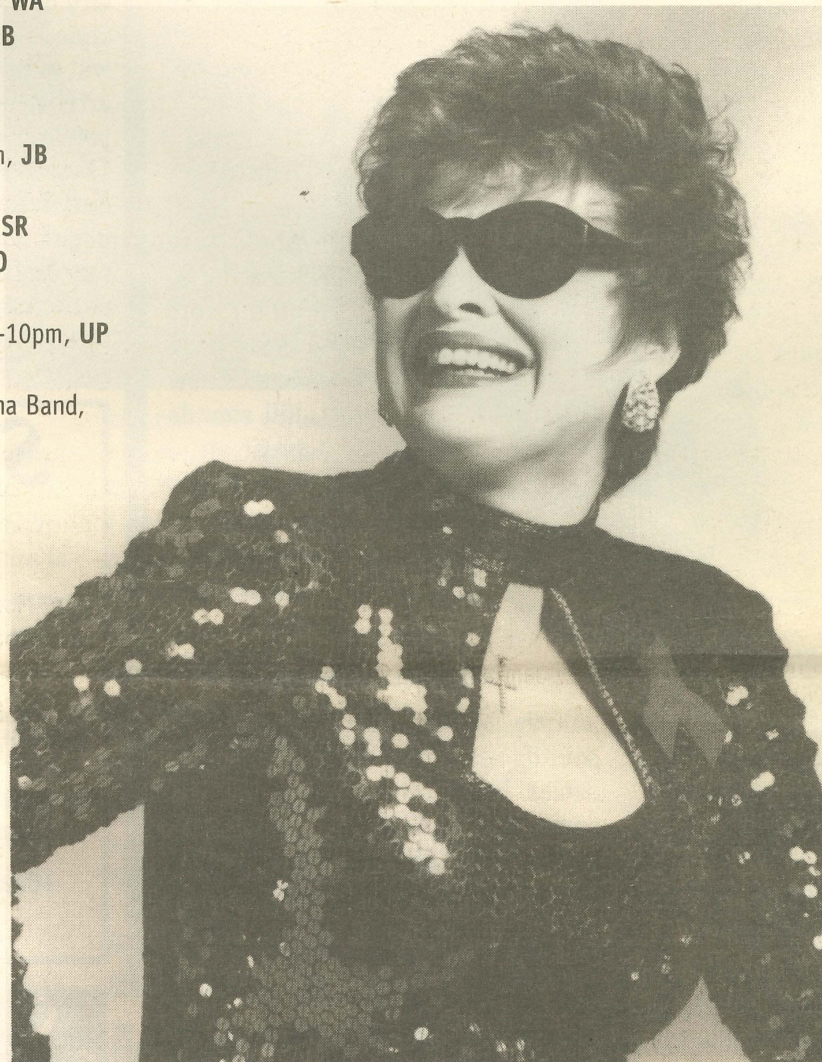
### 12 Wed

Diane Schuur, 8:30 & 10:30pm, **JA**  
Gonzalo Rubalcaba, 7:30 & 9:30, **NO**  
Peter Vinikow/Susan Pascal, 8pm-mid, **S**  
Kelley Johnson, 7-11pm, **WH**  
Kris O'Grady, 7-11pm, **UP**  
Primo Kim, 6:30-10:30pm, **CP**  
Floyd Standifer Group, 7:30-10:30pm, **N**  
Dehner Franks, 7-11pm, **SH**  
Shango Ashe, 9pm, **GS**  
Julie Wolf/Hans Teuber, 8-11pm, **SR**  
Blue Cabaret, 6-9pm, **PS**

### 13 Thur

### 8 Sat

Larry Coryell, **C&SE**  
Wynton Marsalis Quartet, **C&SE**  
The Four Freshmen, **C&SE**



Washington's own Diane Schuur makes a rare appearance at Jazz Alley, April 11-15

Deems Tsutakawa Band, **EW**  
Tina Lear, 9:30pm-12:30am, **SR**  
Mary Lofstrom, 8:30pm, **RO**  
Jam w/Chuck Metcalf, 7:30-11pm, **UP**  
Ham Carson Quartet, 7-10pm, **NO**  
Dehner Franks, 7-11pm, **SH**  
Victory Music Open Mic, 6pm, **CM**

### 7 Fri

Larry Coryell, **C&SE**  
Larry Coryell Master Class, **C&SE**  
Wynton Marsalis Quartet, **C&SE**  
Arturo Sandoval, **C&SE**  
Brian Nova, 9:30pm-1:30am, **SC**  
Nancy Nolan, 8:30pm-12:30am, **SP**  
Music of Frank Zappa, **C&SE**  
Deems Tsutakawa Band, **EW**  
Roger Baird, 9pm, **GS**  
Andrienne Wilson, 7:30-10pm, **CM**  
Janis Mann w/John Hansen, 8pm-mid, **UP**  
Primo Kim, 9:30pm-1am, **CP**  
Dehner Franks, 8pm-mid, **SH**  
Red Kelly & Friends, **KC**  
Milo Petersen Trio, 10pm-1am, **CS**  
Jay Clayton "Billie Holiday Tribute," **OK**  
Volunteer Park Conservatory Orchestra, **C&SE**

**CALENDAR ABBREVIATIONS KEY:**

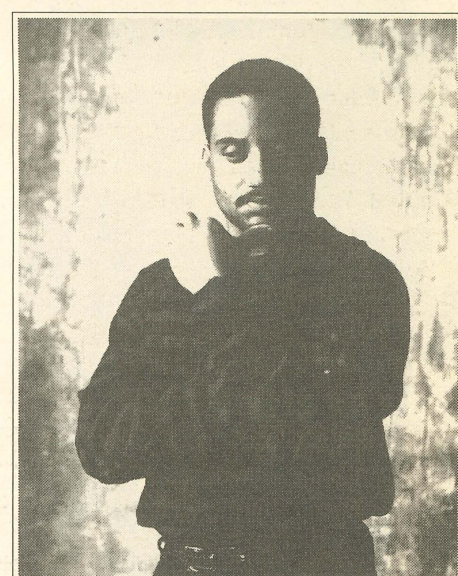
**BB - BELLTOWN BILLIARDS** (90 Blanchard St, Seattle, 448-6779)  
**C&SE** - See Concerts And Special Events Section  
**CM - CROSSROADS SHOPPING CENTER** (15600 NE 8th St, Bellevue, 644-1111)  
**CP - CROWNE PLAZA HOTEL** (6th & Seneca, Seattle, 464-1980)  
**CS - CAFE SOPHIE** (1921 1st Ave, Seattle, 441-6139)  
**CU - CUCINA CUCINA** (Carillon Point, Kirkland, 822-4000)  
**EW - EDGEWATER INN** (2411 Alaskan Way, Seattle, 728-7000)  
**GB - GRANT'S BREWERY PUB** (32 N Front St, Yakima WA, 509-575-2922)  
**GR - GIORGIO'S** (4720 University Wy NE, Seattle, 525-4493)  
**GS - GLASS SLIPPER** (2714 Prince Edward, Vancouver BC)  
**JA - JAZZ ALLEY** (2033 Sixth Ave, Seattle, 441-9729)  
**JB - JACK'S BISTRO** (405 15th Ave E, Seattle, 324-9625)  
**JC - JAZZ CAFE** (Kent Masonic Hall, 805 E Smith St, Kent, 854-4724, 854-1702)  
**KC - KELLY'S** (1101 Tacoma Ave S, Tacoma, 572-2038)  
**MC - MOE** (925 Pike St, Seattle, 323-2373)  
**MS - MINDEMANN'S SOUTH SHORE RESTAURANT** (1011 Perimeter Rd W, Renton, at the Renton Airport, 235-6330)  
**NO - NEW ORLEANS RESTAURANT** (114 First Ave S, Seattle, 622-2563)  
**OK - OK HOTEL** (212 Alaskan Way S, Seattle, 621-7903) Jazz hotline: 233-8065  
**PS - PATTI SUMMERS** (94 Pike, Seattle, 621-8555)  
**PW - PELICAN'S WHARF** (15 Lake St, Kirkland, 822-3474)  
**RO - ROSEBUD ESPRESSO & BISTRO** (719 E Pike St, Seattle, 323-6636)  
**SB - STARBUCKS UNIVERSITY VILLAGE** (4212 University Village Ct NE, Seattle, 522-5228)  
**SC - SALUTE IN CITTA** (Vance Hotel, 6th & Stewart, Seattle, 728-1611)  
**SF - STARFISH ROOM** (1055 Hover St, Vancouver BC, 604-682-0706)  
**SH - SORRENTO HOTEL FIRESIDE ROOM** (900 Madison, Seattle, 622-6400)  
**SL - STILL LIFE COFFEEHOUSE** (709 N 35th St, Seattle, 547-9850)  
**SP - SPENCER'S** (29th Ave N, Bellevue, 881-8888)  
**SR - SERAFINA** (2043 Eastlake Ave E, Seattle, 323-0807)  
**ST - SCARLET TREE** (6521 Roosevelt Way NE, Seattle, 523-7153)  
**SW - SWINGSIDE CAFE** (4212 Fremont Ave N, Seattle, 633-4057)  
**TT - TRACTOR TAVERN** (5213 Ballard Ave NW, Seattle, 789-3599)  
**UP - UNIVERSITY PLAZA HOTEL**, Excalibur's Lounge (400 N 45th St, Seattle, 634-0100 ext 160)  
**VA - VANCOUVER EAST CULTURAL CENTER** (1895 Venables, Vancouver BC, 604-254-9578)

Julian Priester Trio, **C&SE**  
 Diane Schuur, 8:30 & 10:30pm, **JA**  
 Kelley Johnson, 7-11pm, **WH**  
 Edmonia Jarrett/Mickey Martin, 9pm-1am, **SC**  
 Darren Motamedy, 8-11:30pm, **SP**  
 Elizabeth Perera Group, 9pm-mid, **OK**  
 Milo Petersen Trio, 8:30pm, **RO**  
 Jam w/Chuck Metcalf, 7:30-11pm, **UP**  
 Ham Carson Quartet, 7-10pm, **NO**  
 Dehner Franks, 7-11pm, **SH**  
 Victory Music Open Mike, 6 pm, **CM**  
 Deems Tsutakawa Band, **EW**  
 Attention Deficit, 8 & 9:30, **SL**  
 Out of the Woods, 9pm, **GS**  
 Tina Lear, 9:30pm-12:30am, **SR**  
**14 Fri**  
 Cleo Laine/John Dankworth Group, 8pm, **C&SE**  
 Diane Schuur, 8:30 & 10:30pm, **JA**  
 Brian Nova w/Dee Daniels, 9:30pm-1:30am, **SC**  
 Candace McCutcheon w/Karin Kajita, 8pm-mid, **UP**

Primo Kim, 9:30pm-1am, **CP**  
 Dehner Franks, 8pm-mid, **SH**  
 Red Kelly & Friends, **KC**  
 Jonathan Pugh Trio, 10pm-1am, **CS**  
 Marc Harris, 9:30pm-1:30am, **WA**  
 Pigpen, plus Deformations, 9pm, **OK**  
 Deems Tsutakawa Band, **EW**  
 Bruce Freedman Quartet, 9pm, **GS**  
**15 Sat**  
 Diane Schuur, 8:30 & 10:30pm, **JA**  
 Cleo Laine/John Dankworth Group, 2 & 8pm, **C&SE**  
 Brian Nova w/Dee Daniels, 9:30pm-1:30am, **SC**  
 Deems Tsutakawa Band, **EW**  
 Jeff Mahoney Septet, 9pm, **GS**  
 Chunkey Monkeys, 9:30pm-12:30am, **SR**  
 Jazz 8-11:30pm, **JC**  
 Paul Killion Trio, **GR**  
 Singer Showcase w/Jay Clayton, 8-11:30pm, **UP**  
 Primo Kim, 9:30pm-1am, **CP**  
 Dehner Franks, 8pm-mid, **SH**  
 Red Kelly & Friends, **KC**  
 Milo Petersen Trio, 10pm-1am, **CS**  
 Jump Ensemble, 8-11pm, **WA**  
**16 Sun**  
 Buddy Catlett Jam, 9pm-1am, **SC**  
 Deems Tsutakawa Band, **EW**  
 Sean Drabitt Quartet, 9pm, **GS**  
 Patricio Contreras, 7-9:30pm, **SR**  
 Double Forte, 5-8pm, **PW**  
 Edmonia Jarrett, 7:30 & 9:15pm, **JA**  
 Brian Nova Trio, 9pm-mid, **BB**  
 Jazz Jam, 7:30pm, **MS**  
**17 Mon**  
 Andre Thomas & Quietfire, 8pm-mid, **SC**  
 Darren Motamedy, 7:30-11pm, **SP**  
 Jonathan Swanson, 8-11pm, **SR**  
 Jam w/Buddy Catlett, 7-11pm, **UP**  
 New Orleans Quintet, 6:30-9:30pm, **NO**  
 Jazz Jam, 9pm-mid, **BB**  
**18 Tue**  
 Jeff Lorber Fusion, 8:30 & 10:30, **JA**  
 Barney McClure Trio, 7-11pm, **SP**  
 Chuck Metcalf Group, 8pm-mid, **SC**  
 Bill Allison, 7-11pm, **UP**  
 File Gumbo Zydeco Band, 7-10pm, **NO**  
 Julian Catford, 8-11pm, **SR**  
**19 Wed**  
 Peter Vinikow/Susan Pascal, 8pm-mid, **SC**  
 Jeff Lorber Fusion, 8:30 & 10:30, **JA**  
 Kelley Johnson, 7-11pm, **WH**  
 Hal Galper Trio, 8pm, **NO**  
 Ihiala-African Dance & Music, 9pm, **GS**  
 Julie Wolf/Hans Teuber, 8-11pm, **SR**  
 Blue Cabaret, 6-9pm, **PS**  
 Kris O'Grady, 7-11pm, **UP**  
 Primo Kim, 6:30-10:30pm, **CP**  
 Floyd Standifer Group, 7:30-10:30pm, **NO**  
 Dehner Franks, 7-11pm, **SH**  
**20 Thur**  
 Hal Galper Trio, 8pm, **NO**  
 Edmonia Jarrett/Mickey Martin, 9pm-1am, **SC**  
 Jeff Lorber Fusion, 8:30 & 10:30, **JA**  
 Kelley Johnson, 7-11pm, **WH**  
 Korla Wiygal, 8pm-mid, **SP**  
 Deems Tsutakawa Band, **EW**  
 Tina Lear, 9:30pm-12:30am, **SR**  
 Evan Buehler Trio, 8:30-11pm, **RO**  
 Michael Shuler, 8 & 9:30, **SL**  
 Jam w/Chuck Metcalf, 7:30-11pm, **UP**  
 Eric Watson/John Lindberg, 9:30pm, **GS**  
 Dehner Franks, 7-11pm, **SH**  
 Jay Clayton Project, **MC**  
 Victory Music Open Mike, 6 pm, **CM**  
**21 Fri**  
 Hal Galper Trio, 8pm, **NO**  
 Brian Nova, 9:30pm-1:30am, **SC**  
 Jeff Lorber Fusion, 8:30 & 10:30, **JA**  
 Garfield HS Jazz Ensemble, **C&SE**  
 Beth Winter, 8:30pm-12:30am, **SP**

Janis Mann w/John Hansen, 8pm-mid, **UP**  
 Primo Kim, 9:30pm-1am, **CP**  
 Dehner Franks, 8pm-mid, **SH**  
 Red Kelly & Friends, **KC**  
 Milo Petersen Trio, 10pm-1am, **CS**  
 Deems Tsutakawa Band, **EW**  
 Christian Vander Trio, 9pm, **GS**  
 Paul Anastasio Trio, 7:30-10pm, **CM**  
**22 Sat**  
 Beth Winter, 8:30pm-12:30am, **SP**  
 Brian Nova, 9:30pm-1:30am, **SC**  
 Michael Powers Group, 8pm, **NO**  
 Paul Killion Trio, **GR**  
 Jeff Lorber Fusion, 8:30 & 10:30, **JA**  
 Singer Showcase w/Jay Clayton, 8-11:30pm, **UP**  
 Primo Kim, 9:30pm-1am, **CP**  
 Dehner Franks, 8pm-mid, **SH**  
 Deems Tsutakawa Band, **EW**  
 Christian Vander Trio, 9pm, **GS**  
 Chunkey Monkeys, 9:30pm-12:30am, **SR**  
 Jazz 8-11:30pm, **JC**  
 Red Kelly & Friends, **KC**  
 Phantoms of Soul, 8-11pm, **WA**  
**23 Sun**  
 Trilok Gurtu & David Torn, 8pm, **C&SE**  
 Roosevelt HS Jazz Ensemble, 8pm, **NO**  
 Double Forte, 5-8pm, **PW**  
 Marc Seales Project, 7:30 & 9:15pm, **JA**  
 Brian Nova Trio, 9pm-mid, **BB**  
 Jazz Jam, 7:30pm, **MS**  
 Susan Pascal Trio, 7-10pm, **WA**  
 Buddy Catlett Jam, 9pm-1am, **SC**  
 Chuck Metcalf Octet, 3pm, **CM**  
 Trish Hatley, 6-10pm, **UP**  
 Deems Tsutakawa Band, **EW**  
 Karen Graves Group, 9pm, **GS**  
 Patricio Contreras, 7-9:30pm, **SR**  
**24 Mon**  
 Darren Motamedy, 7:30-11pm, **SP**  
 Andre Thomas & Quietfire, 8pm-mid, **SC**  
 Contemporary Group, **C&SE**  
 Jonathan Swanson, 8-11pm, **SR**  
 Jam w/Buddy Catlett, 7-11pm, **UP**  
 New Orleans Quintet, 6:30-9:30pm, **NO**  
 Jazz Jam, 9pm-mid, **BB**  
**25 Tue**  
 Al Grey/Sweets Edison Quintet, 8:30 & 10:30pm, **JA**  
 Barney McClure Trio, 7-11pm, **SP**  
 Chuck Metcalf Group, 8pm-mid, **SC**  
 Barbara Brockhaus w/Zyah, 7-11pm, **UP**  
 File Gumbo Zydeco Band, 7-10pm, **NO**  
 Julian Catford, 8-11pm, **SR**  
 Bert Wilson and Rebirth, 9pm, **TT**  
**26 Wed**  
 Al Grey/Sweets Edison Quintet, 8:30 & 10:30pm, **JA**  
 Kelley Johnson, 7-11pm, **WH**  
 Peter Vinikow/Susan Pascal, 8pm-mid, **SC**  
 Julie Wolf & Hans Teuber, 8-11pm, **SR**  
 Blue Cabaret, 6-9pm, **PS**  
 Kris O'Grady, 7-11pm, **UP**  
 Primo Kim, 6:30-10:30pm, **CP**  
 Floyd Standifer Group, 7:30-10:30pm, **NO**  
 Dehner Franks, 7-11pm, **SH**  
**27 Thur**  
 Kelley Johnson, 7-11pm, **WH**  
 Andy Shaw, 8pm-mid, **SP**  
 Edmonia Jarrett/Mickey Martin, 9pm-1am, **SC**  
 Deems Tsutakawa Band, **EW**  
 Jenny Davis w/Milo Petersen & Geoff Harper, 8:30-11:30pm, **RO**  
 Ralph Eppel Quintet, 9pm, **GS**  
 Tina Lear, 9:30pm-12:30am, **SR**  
 Al Grey/Sweets Edison Quintet, 8:30 & 10:30pm, **JA**  
 Jam w/Chuck Metcalf, 7:30-11pm, **UP**  
 Ham Carson Quartet, 7-10pm, **NO**  
 Dehner Franks, 7-11pm, **SH**

Jazz Night Concert #4, **C&SE**  
 Greta Matassa, **C&SE**  
 B.B. White/Billy Wallace, 8 & 9:30, **SL**  
 Victory Music Open Mike, 6 pm, **CM**  
**28 Fri**  
 Jovino Santos Neto Quartet, **C&SE**  
 Al Grey/Sweets Edison Quintet, 8:30 & 10:30pm, **JA**  
 Greta Matassa, **C&SE**  
 Michael Powers, 8:30pm-mid, **SP**  
 Brian Nova, 9:30pm-1:30am, **SC**  
 Deems Tsutakawa Band, **EW**  
 Jazz Artists Series, **C&SE**  
 Tony Wilson Septet, 9pm, **GS**  
 Candace McCutcheon/Karin Kajita, 8pm-mid, **UP**  
 Primo Kim, 9:30pm-1am, **CP**  
 Dehner Franks, 8pm-mid, **SH**  
 Red Kelly & Friends, **KC**  
 Frederick Tuxx Trio, 10pm-1am, **CS**  
**29 Sat**  
 Al Grey/Sweets Edison Quintet, 8:30 & 10:30pm, **JA**  
 Brian Nova, 9:30pm-1:30am, **SC**  
 Michael Powers, 8:30pm-mid, **SP**  
 Greta Matassa/Joe Baque/Andy Zadrozny, 8:30 & 10pm, **C&SE**  
 Jeff Hay Trio, 8-11pm, **WA**  
 Deems Tsutakawa Band, **EW**  
 Alan Matheson Big Band, 9pm, **GS**  
 Chunkey Monkeys, 9:30pm-12:30am, **SR**  
 Jazz 8-11:30pm, **JC**  
 Paul Killion Trio, **GR**  
 Ellen Marx w/Larry Fuller, 8pm-mid, **UP**  
 Primo Kim, 9:30pm-1am, **CP**  
 Dehner Franks, 8pm-mid, **SH**  
 Red Kelly & Friends, **KC**  
 Milo Petersen Trio, 10pm-1am, **CS**  
**30 Sun**  
 Steve Lacy, 7:30 & 9:15pm, **JA**  
 Buddy Catlett Jam, 9pm-1am, **SC**  
 Martin Franklin Quartet, 9pm, **GS**  
 Patricio Contreras, 7-9:30pm, **SR**  
 Elizabeth Perera, 7:30-10:30pm, **JB**  
 Double Forte, 5-8pm, **PW**  
 Toby Schneider, 6-10pm, **UP**  
 Brian Nova Trio, 9pm-mid, **BB**  
 Jazz Jam, 7:30pm, **MS**  
 TKO Jazz Ensemble, 7-10pm, **WA**  
 Deems Tsutakawa Band, **EW**



**Gonzalo Rubalcaba**  
**April 11 & 12 - 7:30 & 9:30**  
**Hal Galpen Trio**  
**April 19, 20, & 21 - 8pm**

**THE NEW ORLEANS**

CREOLE RESTAURANT  
 114 First Avenue South. For reservations call (206) 622-2563.

Creole & Cajun  
 Cookery with  
 Southern Style!



JAZZ NIGHTLY

**KPLU Jazz Line**  
**292-JASS**